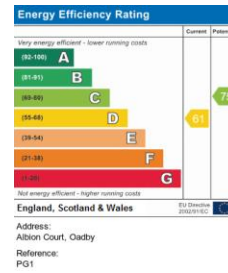
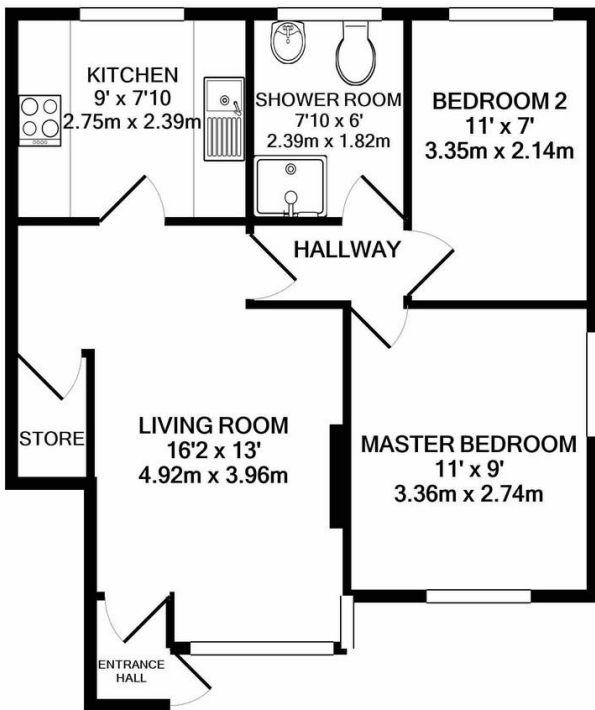




Property Summary

This immaculately presented and refurbished ground floor flat is set in an exclusive development within the highly sought after location of Oadby. Offered for over 55's only the flat comprises of two bedrooms, living room, shower room and fitted kitchen. The attractive development boasts landscaped communal gardens and allocated parking. Internal inspection recommended to appreciate the accommodation on offer.



- Over 55's Development
- Ground Floor Flat
- Two Bedrooms
- Fitted Kitchen
- Shower Room
- Communal Gardens
- Allocated Parking
- Attractive Complex

PHILLIPS GEORGE LTD

TOTAL APPROX. FLOOR AREA 495 SQ.FT. (46.0 SQ.M.)

Whilst every attempt has been made to ensure the accuracy of the floor plan contained here, measurements of doors, windows, rooms and any other items are approximate and no responsibility is taken for any error, omission, or mis-statement. This plan is for illustrative purposes only and should be used as such by any prospective purchaser. The services, systems and appliances shown have not been tested and no guarantee as to their operability or efficiency can be given

Made with Metropix ©2020

phillips george | sales & lettings

Agents Note: Whilst every care has been taken to prepare these sales particulars, they are for guidance purposes only. All measurements are approximate and are for general guidance purposes only and whilst every care has been taken to ensure their accuracy, they should not be relied upon and potential buyers are advised to recheck the measurements

46 Long Street, Wigston, Leicestershire, LE18 2AH

info@phillipsgeorge.co.uk
0116 216 8178

